

TECHNICAL SPECIFICATION

KULTURFABRIK KOFMEHL SOLOTHURN

VERSION 2.4

1ST MARCH 2011

HALLE
(BIG CONCERT ROOM)

&

RAUMBAR
(SMALL CONCERT ROOM)



KOFMEHL

KULTURFABRIK SOLOTHURN

Contact:

Kulturfabrik Kofmehl
Verein Creep
Kofmehlweg 1
4503 Solothurn
Switzerland

T +41 32 621 20 60
F +41 32 621 20 61

info@kofmehl.net
www.kofmehl.net

For Sound Technical Concerns:
Mr. Buzz
Mobile +41 79 254 81 34
buzz@kofmehl.net

For Light Technical Concerns:
Mr. Nik Fischer
Mobile +41 79 380 59 88
nik.fischer@crew.kofmehl.net

TABLE OF CONTENT

TECHNICAL SPECIFICATION HALLE (BIG CONCERT ROOM)	3
Sound Specification	3
Front of House	3
Monitoring	4
Microphones & DI	4
DJ-ing	4
Stage	4
Light Specification	5
Stage Top View	5
Stage Side View	6
Equipment List	7
Lee Colours	7
DMX Channels	8
Pictures Halle	9
View from balcony to stage	9
View from stage to FoH	9
TECHNICAL SPECIFICATION RAUMBAR (SMALL CONCERT ROOM)	10
Sound Specification	10
Front of House	10
Monitoring	10
Microphones & DI	10
DJ-ing	11
Stage	11
Light Specification	11
Pictures Raubar	12
View from FoH to stage	12
View from stage to FoH	12
SITUATION PLAN KULTURFABRIK KOFMEHL	13

TECHNICAL SPECIFICATION HALLE (Big Concert Room)

Max. Sound Level 100 db (A) Leq over 1 hour!

In Switzerland, the maximum Leq of 100 dB(A) is legally permitted during a period of no longer than one hour. Measurement positions and devices, with which the Kulturfabrik takes their measurements, have been calibrated and approved by the department in charge. Measurement data of each concert are being recorded and evaluated.

Sound Specification

Front of House

Speakers:

12 x	Stoll CFR 2610 Convertible (10 x 5", 1.4")	Line array
4 x	Stoll IL 3500 Infralow (4 x 18")	long excursion driver

For more information about the PA:

www.stoll-speakers.ch

Amping

2 x	Lab.gruppen fp +10000Q	(Infralow)
2 x	Lab.gruppen PLM 10000	(Convertible)

Controller

3 x	Lake Contour
-----	--------------

Mixing Console

1x	Soundcraft MH3 32+4
----	---------------------

Side Rack

1 x	dbx 2231 Equalizer	(stereo)
2 x	t.c. D-Two Delay	
1 x	t.c. 2290 Delay	
1 x	t.c. M-One Effect	
1 x	Yamaha SPX 90 Effect	
1 x	Yamaha SPX 900 Effect	
1 x	BSS DPR402 Compressor	(dual)
2 x	dbx 166XL Compressor / Gate	(dual)
1 x	Drawmer DS201 Gate	(dual)
1 x	Drawmer DS404 Gate	(fourfold)
1 x	ARX 6 Gate	(sixfold)

Players

1 x	Denon DN 1000F CD Player
-----	--------------------------

Communication

1 x	Monacor Talkbox
1 x	Sennheiser 815S Talkback Mik
1 x	ASL Intercom Beltpack
1 x	ASL Intercom Headset

Monitoring

Speakers

8 x	Stoll FR 2310A Compact (12" /1.3")	Floor wedges, 2 way active
1 x	Stoll FR 2310 Compact (12" /1.3")	Listening wedge
1 x	Stoll SL 3000 Sub Bass (2 x 18")	Sub Bass for Drumfill
1 x	Stoll FR 2508 Top (15" / 1.4")	Top for Drumfill

Amping

2 x	Lab.gruppen C 48:4	for the 12" of the Floor wedges
1 x	Lab.gruppen C 20:8X	for the 1.3" of the Floor wedges
1 x	Lab.gruppen fp2400 Q	Listening wedge, Drumfill
		7 ampways for floor wedges, 1 for drumfill

Controller

2 x	Sabine NAV 4802 Controller	Floor wedges
1 x	Lake Contour	Listening wedge, Drumfill

Mixing Console

1x	Crest Century M	12 Aux ways
----	-----------------	-------------

Siderack

4 x	dbx 2231 Equalizer	(Stereo)
2 x	dbx 166XL Compressor / Gate	(dual)

Communication

1 x	Monacor Talkbox
1 x	Sennheiser 815S Talkback Mik
1 x	ASL Intercom Beltpack
1 x	ASL Intercom Headset

Microphones & DI

1 x	Shure Beta 91	
1 x	Shure Beta 52	
4 x	Shure Beta 56	
4 x	Shure Beta 58	
3 x	Shure SM 58	
7 x	Shure SM 57	
1 x	Audix D6	
3 x	AKG C-451B	
3 x	Sennheiser e604	
4 x	Sennheiser e609	
1 x	Sennheiser MD421	
3 x	Sennheiser MD441	
2 x	Radial ProD2 Passive DI	(dual)
6 x	Passive DI	

DJ-ing

1 x	Rane TTM 57 SL Mixer
1 x	Pioneer DJM 600 Mixer
2 x	Pioneer CDJ 100 CD Player
2 x	Technics MK II Turntables

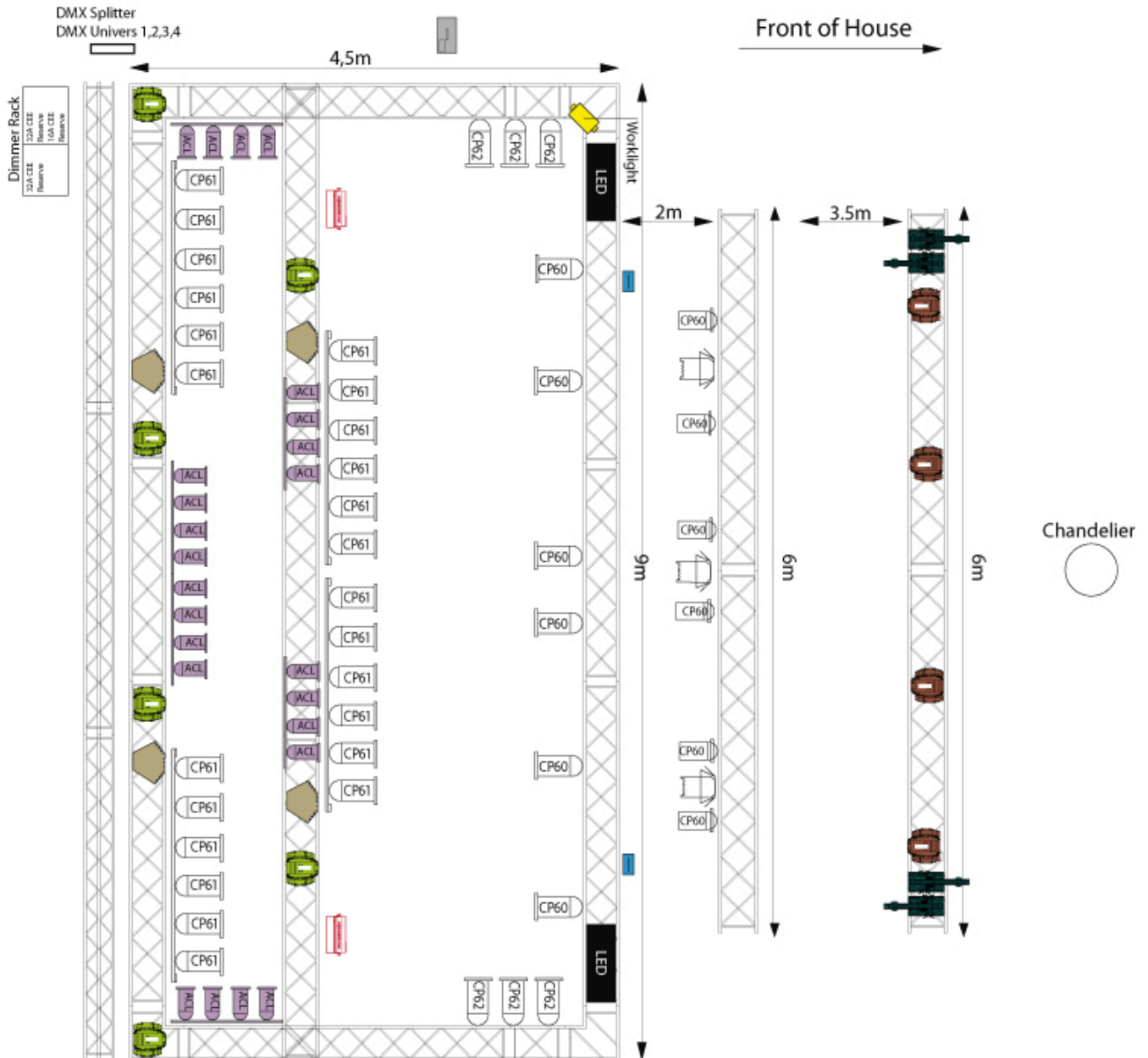
Stage

Stage Size	Width 5m / Length 10m / Height 1m
4 x Riser	Width 1m / Length 2m / Height 0.4m

Backline Power Light Specification

12 x Type 13 230V 13A

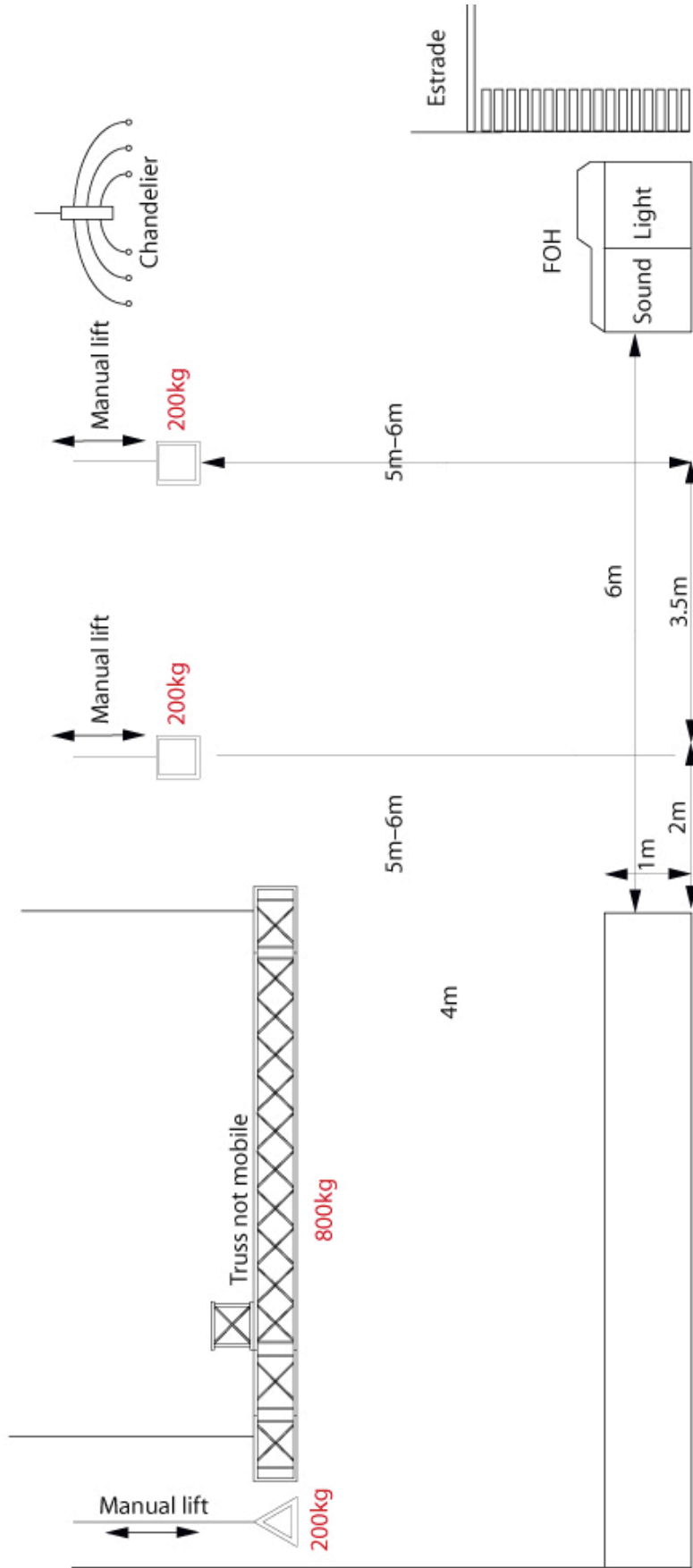
Stage Top View



Legend

- | | | | |
|--|---------------------------|--|---|
| | 4x 6er Parbars (6-bars) | | 2x Martin Atomic Strobe 3000 |
| | 16x Par 64 | | 4x Eurolight Multiray Omnilux |
| | 3x Fresnel 1kW | | 2x Blinder Audience 4xPar 36 2600 Watt |
| | 6x Floorspot Par 64 short | | 6x Moving Head Martin Mac 250 Entour Ext Mode |
| | 6x ACL (4-bars) | | 1x Hazer Smoke Factory Tour Hazer II |
| | 2x LED (4-bars) | | 1x Fog Machine Thunder Head DMX Showtec Compact |
| | | | 4x Moving Head Stage Line Twist 252 |
| | | | 4x Scanners Martin MX1 (Disco only) |

Stage Side View



All weight specifications are free on the truss and can be used by you.

Equipment List

4 x	6er Parbars	(6-bars)
16 x	Par 64	
3 x	Fresnel 1kW	
6 x	Floorspot Par 64 short	
6 x	ACL	(4-bars)
2 x	Free Dimm Channels	
2 x	Martin Atomic Strobe 3000	
4 x	Eurolight Multiray	
2 x	Blinder Audience	(4x Par 36, 650 Watt)
6 x	Moving Head Martin Mac 250	
1 x	Hazer Smoke Factory Tour Hazer II	
1 x	Fog Machine Thunder Head DMX	
12 x	2kw Dimmerchannels	(free)
1 x	Avolites Pearl Titan Expert	
4x	Moving Head Stage Line Twist 252	(Afterparty & Disco only)
4x	Scanners Martin MX1	(Afterparty & Disco only)

Free Power fo your use:

2x 32A Free Power for Guests (3 phase CEE)

1x 16A (3 phase CEE)

Lee Colours

220	White Frost
789	Blood Red
27	Medium Red
106	Primary Red
164	Flame Red
135	Deep Golden Amber
134	Golden Amber
105	Orange
20	Medium Amber
102	Light Amber
101	Yellow
205	Half C.T. Orange
285	Three Qtr C.T. Orange
746	Brown
122	Fern Green
124	Dark Green
139	Primary Green
131	Marine Blue
116	Medium Blue-Green
120	Deep Blue
119	Dark Blue
200	Double C.T. Blue
201	Full C.T. Blue
174	Dark Steel Blue
202	Half C.T. Blue
142	Pale Violet
180	Dark Lavender
126	Mauve

Pictures Halle

View from balcony to stage



View from stage to FoH



Technical Specification Raubar (Small Concert Room)

Max. Sound Level 100 db (A) Leq over 1 hour!

In Switzerland, the maximum Leq of 100 dB(A) is legally permitted during a period of no longer than one hour. Measurement positions and devices, with which the Kulturfabrik takes their measurements, have been calibrated and approved by the department in charge. Measurement data of each concert are being recorded and evaluated.

Sound Specification

Front of House

Speakers

2 x	Stoll FR 2508 Fullrange Top (15" / 1.4")	flown, with 80° x 60° radiation
4 x	Stoll FR 2500 Bass Extender (15")	centered on the floor

Amping

1 x	Lab.gruppen 2002	2-way
-----	------------------	-------

Mixing Consoles

1x	Midas Venice 320	2 Aux pre, 2 Aux pre/post, 2 Aux post
----	------------------	---------------------------------------

Siderack

1 x	dbx 2231 Equalizer	Front
2 x	dbx 1215 Equalizer	Monitoring
1 x	t.c. M-One Effect	
1 x	t.c. D-Two Effect	
1 x	Yamaha Rev500 Effect	
2 x	Drawmer DL241 Compressor	(dual)
2 x	Drawmer DS201 Gate	(dual)

Monitoring

Floorwedges

4 x	Stoll CL 122L (12" / 1.4")	
-----	----------------------------	--

Drumfill

1 x	Turbosound TMS 2 (15" / 10" / 1")	full hornloadet
-----	-----------------------------------	-----------------

Amping

1 x	Lab.gruppen 1200 C	(4-way)
-----	--------------------	---------

Microphones & DI

1 x	Shure Beta 91	
1 x	Shure Beta 52	
4 x	Shure Beta 56	
4 x	Shure Beta 58	
3 x	Shure SM 58	
7 x	Shure SM 57	
1 x	Audix D6	
3 x	AKG C-451B	
3 x	Sennheiser e604	
4 x	Sennheiser e609	
1 x	Sennheiser MD421	
3 x	Sennheiser MD441	
2 x	Radial ProD2 Passive DI	(dual)
6 x	Passive DI	

DJ-ing

- 1 x Pioneer DJM 600 Mixer
- 2 x Pioneer CDJ 100 CD Player
- 2 x Technics MK II Turntables

Stage

Stage Size
Backline Power

Width 3.75m / Length 6m / Height 0.45m
4 x Type 13 230V 13A

Light Specification

Stage lights

- 3 x 6Bars Par 54 300W

Light Desk

- 1x Light Processor Q12

Dimmer

- 1x Dimmerpack with 16 Channels (500W each)

Additional

- Discoeffect for dancefloor

Pictures Raubar

View from FoH to stage



View from stage to FoH



