



TECHNICAL SPECIFICATION

HALLE BIG CONCERT ROOM | 900 PAX
RAUMBAR SMALL CONCERT ROOM | 200 PAX

Kulturfabrik Kofmehl Solothurn | August 2024 | Version 1

Contact

Kulturfabrik Kofmehl
Verein Creep
Kofmehlweg 1
4503 Solothurn
Switzerland
T +41 32 621 20 60
office@kofmehl.net
www.kofmehl.net

For Technical Concerns

Mr. Yves Hauenstein
Mobile +41 79 613 73 67
yves@kofmehl.net

TABLE OF CONTENT

TECHNICAL SPECIFICATION HALLE (Big Concert Room)

Sound Specification	Front of House	1
	Equipment List	1
	Monitoring	2
	Stage and Power	2
Light Specification	Conventional Lights	3
	Intelligent Lights	4
	Equipment List	5
	DMX Channel List	6
	Pictures Halle	7

TECHNICAL SPECIFICATION RAUMBAR (Small Concert Room)

	Sound Specification	8
	Light Specification	9
	DMX Channel List	10
	Equipment List	10
	Pictures Raubar	11

HALLE (Big Concert Room)

MAX. SOUND LEVEL 100 DB (A) LEQ AVERAGE PER HOUR!

In Switzerland, its not allowed to exceed the Limit of LEQ 100 dB(A) per hour with tolerated peaks up to 125 dB. Measurement positions and devices, with which the Kulturfabrik Kofmehl takes their measurements, have been calibrated and approved by the department in charge. Measurement data of each concert are being recorded and evaluated.

IT'S FORBIDDEN TO USE FREQUENCIES IN THE SPECTRUM OF 694 MHZ – 823 MHZ (700-RANGE) IN SWITZERLAND

SOUND SPECIFICATION

FRONT OF HOUSE

SPEAKERS	12 x Stoll CFR 2610 Convertible (10 x 5", 1.4") 4 x Stoll IL 3500 Infralow (4 x 18") For more information about the PA	Line array Ribbon HF long exc CB design www.stoll-speakers.ch
AMPING	4 x Lab.gruppen PLM 12k44	Infralow / Convertible
MIXING CONSOLE	1 x Allen & Heath Avantis 1 x Digital Soundcraft Vi1 1 x Allen & Heath SQ5	(FOH or Monitor) (FOH or Monitor) (FOH or Monitor)
COMMUNICATION	1 x ASL Intercom System (between FOH and monitoring)	

EQUIPMENT LIST

MICROPHONES & DI	1 x Shure Beta 91 1 x Shure Beta 52 3 x Shure Beta 56 2 x Shure Beta 58 4 x Shure SM 58 5 x Shure SM 57 1 x Audix D6 1 x AKG C-451B 3 x RODE NT5 4 x Sennheiser e604 2 x Sennheiser e609 1 x Sennheiser e945 1 x Radial ProD2 Passive DI (dual) 3 x BSS Active DI 3 x Passive DI
DJ-ING	1 x Pioneer DJM 900 NEXUS Mixer 1 x Pioneer DJM 900 Mixer 2 x Pioneer CDJ 3000 2 x Pioneer CDJ 2000 NEXUS CD Player 2 x Pioneer CDJ 2000 CD Player 2 x Technics MKII Turntables

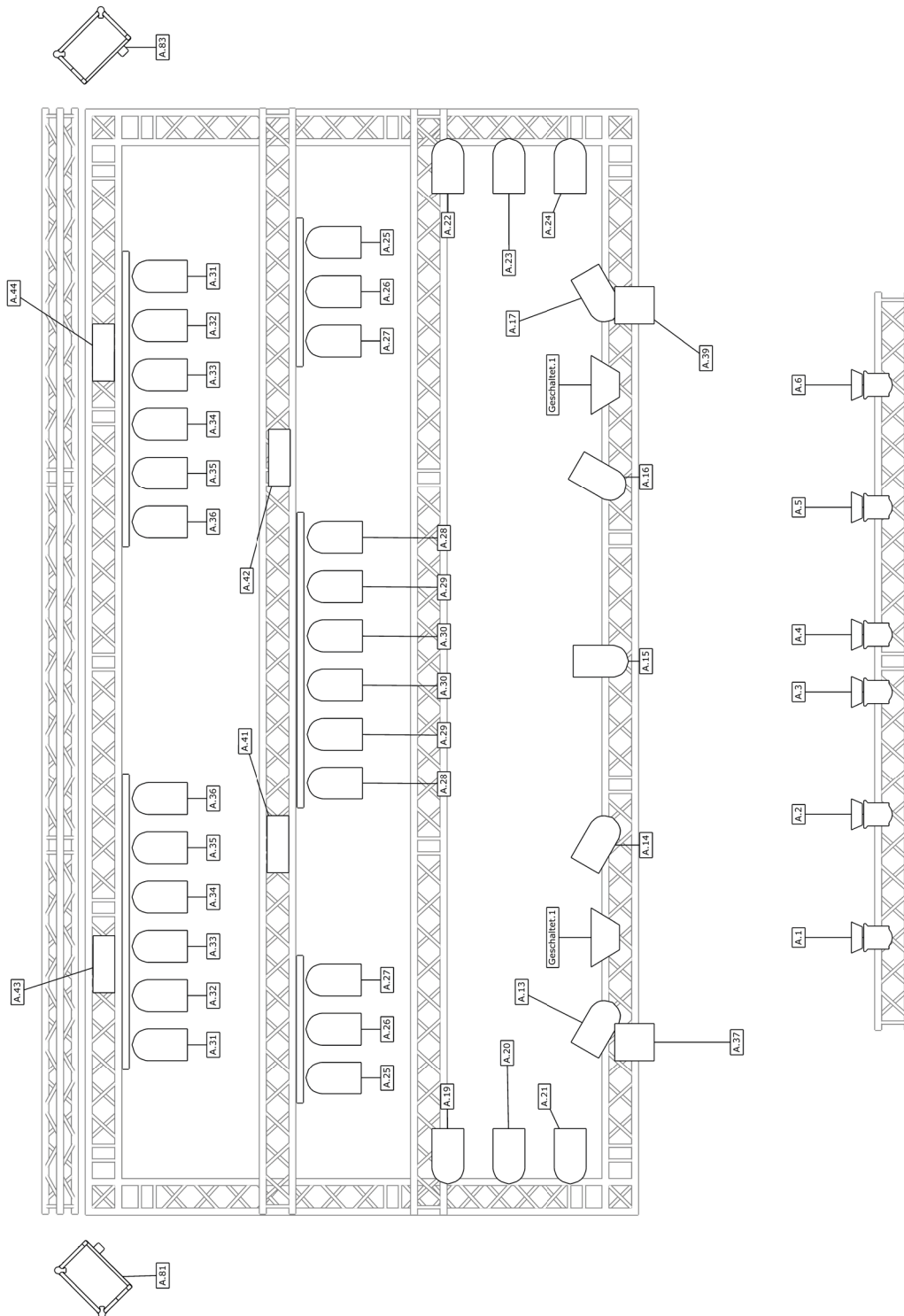
MONITORING

SPEAKERS	8 x Voice Acoustic CXN-16 (4 x 8" / 1.4") 1 x Voice Acoustic CXN-16 (4 x 8" / 1.4") 2 x Stoll SL 3000 Sub Bass (2 x 18") 1 x Stoll FR 2508 Top (15" / 1.4") 2 x Kofmehl Sidefill (4 x 10" / 1 x 1.4")	Floor wedges, 2 way active Listening wedge Sub Bass for Drumfill Top for Drumfill Sidefill, 2 way active
AMPING	4 x Lab.gruppen PLM 10000 1 x Lab.gruppen fp 2400 Q 8 x Ampways for floor wedges, 1 for drumfill	Bi-Amping mode for the 12" and 1.4" off the floor wedges, listening wedge and Drumfill
CONTROLLER	1 x Xilica	Listening wedge, Drumfill
MIXING CONSOLE	1 x Allen & Heath Avantis 1 x Digital Soundcraft Vi1 1 x Allen & Heath SQ5	(FOH or Monitor) (FOH or Monitor) (FOH or Monitor)
COMMUNICATION	1 x ASL Intercom System (between FOH to monitoring)	
MULTICORE	1 x Analog Muco 32 x 16 (with monitor split/fan out) 4 x RJ45 Kat. 6 (Ethercon) 4 x BNC 2 x Fibre Cable LCLC Multimode OM4 1 x Allen & Heath Digital Stagebox 48 / 16 1 x Digital Stagebox Soundcraft 32 / 16	

STAGE

Stage Size	Width 10m / Depth 5m / Height 1m Clearance ≈ 5m (between Stage and Rig) 4x Liftket D8 Plus chain hoists 500kg	Riser	4 x Riser / 2 x 1m / fixed height of 0.4m 4 x Butec Riser / 2 x 1m 8 x Butec Legs / 0.2m 16 x Butec Legs / 0.4m 16 x Butec Legs / 0.6m 4 x Butec Legs / 0.8m 8 x Butec Legs / 1m
Max. stage load	500kg / m ²		
Power Audio/Backline	1 x CEE 63A (3 phase CEE) 12 x Type 13 / Schuko 230V / 13A		

LIGHT SPECIFICATION – HALLE CONVENTIONAL LIGHTS



LEGEND



35x Par 64



2x Blinder Audience 4xPar 36

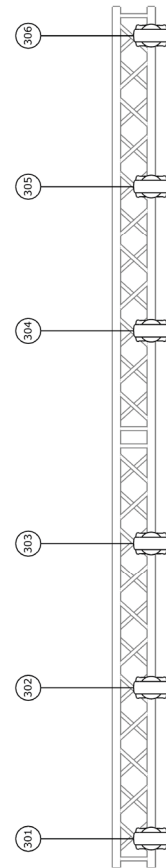
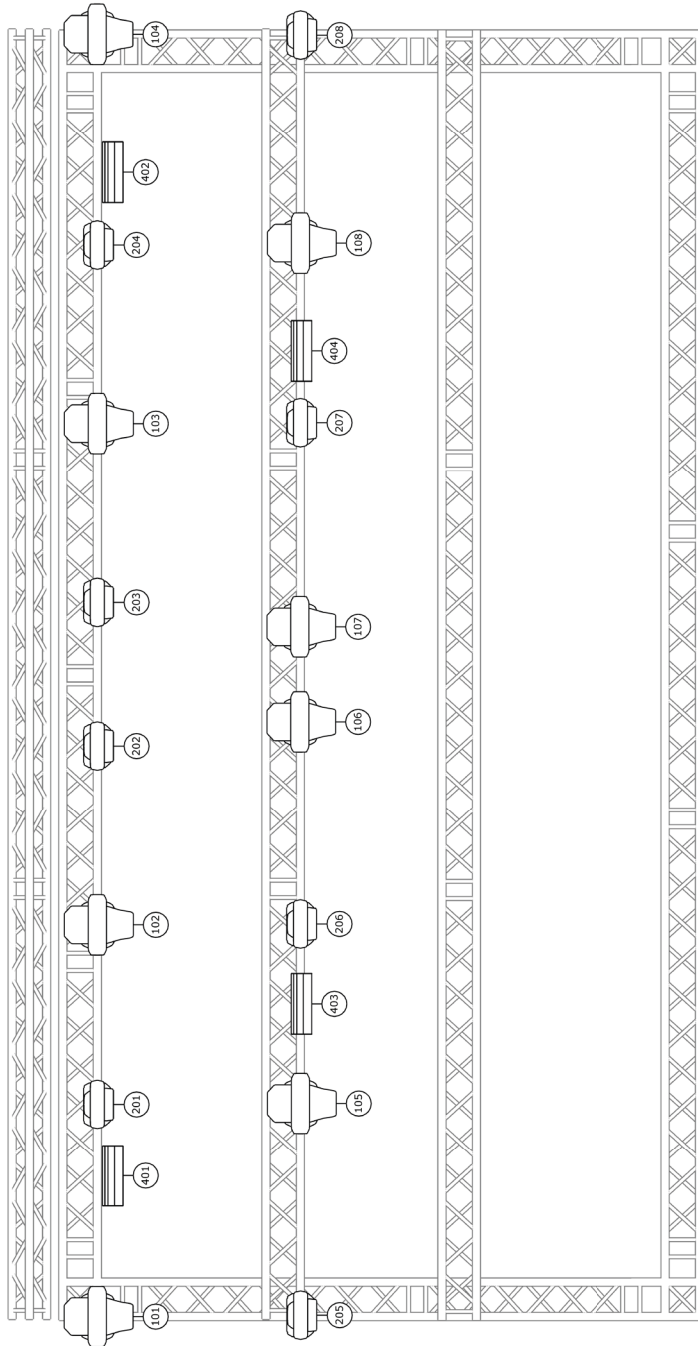


6x Fresnel 1kW

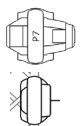


4x Blinder Audience 2xPar 36

LIGHT SPECIFICATION – HALLE INTELLIGENT LIGHTS



LEGEND



8x Moving Head Varyscan P7



8x Clay Paky Mini-B



6x Varytec Hero Wash



4x Martin Atomic Strobe 3000

LIGHT SPECIFICATION

EQUIPMENT LIST

35 x	Par 64	
6 x	Fresnel DTS 1kW	
4 x	Martin Atomic Strobe 3000	
2 x	4 way Blinder Audience	(4x Par 36, 650 Watt)
4 x	2 way Blinder Audience	(2x Par 36, 650 Watt)
6 x	Floorspot Par 64 short	
8 x	Moving Head JB-Lighting Varyscan P7	
8 x	Moving Head Clay Paky Mini-B	
6 x	Moving Head Varytec Hero Wash	
2 x	Hazer Smoke Factory Tour Hazer II	
1 x	Fog Machine Smoke Factory Captain D	
6 x	2kw Dimmerchannels (free)	

CONSOLE / DIMMER

1 x	Avolites Pearl Titan Arena
1 x	Hotpatch System for all lights

LEE COLOURS

220	White Frost	131	Marine Blue
789	Blood Red	116	Medium Blue-Green
27	Medium Red	120	Deep Blue
106	Primary Red	119	Dark Blue
164	Flame Red	200	Double C.T. Blue
135	Deep Golden Amber	201	Full C.T. Blue
134	Golden Amber	174	Dark Steel Blue
105	Orange	202	Half C.T. Blue
20	Medium Amber	142	Pale Violet
102	Light Amber	180	Dark Lavender
101	Yellow	126	Mauve
205	Half C.T. Orange	172	Lagoon Blue
285	Three Qtr C.T. Orange	181	Congo Blue
746	Brown	135	Deep Golden Amber
122	Fern Green	152	Pale Gold
124	Dark Green	158	Deep Orange
139	Primary Green	104	Deep Amber

DMX CHANNELS

We have 4 DMX LINES FROM THE STAGE TO THE FOH.
The 1. DMX line is connected to the Dimmer Rack (Conventional Light)
The 2. DMX line is connected to Moving Head's (Moving Light)
THE 3. DMX LINE IS FREE FOR ANY ADDITIONAL EQUIPMENT + ROOM LIGHT
THE 4. DMX LINE IS FREE FOR ANY ADDITIONAL EQUIPMENT
2 x Ethernet RJ45 Kat. 6 with Ethercon

FREE POWER FOR YOUR USE

1x 63A or 1x 32A + 1x 16A for Guests (3 phase CEE)

VIDEO

1 x	16:9 Elite Screen 3.6m x 2m (166")
1 x	HD Projector NEC P502H 5000 ansi (Full HD)

DMX CHANNEL LIST

DMXLINE 1 (A)

A.1	FRESNEL FRONT 1
A.2	FRESNEL FRONT 2
A.3	FRESNEL FRONT 3
A.4	FRESNEL FRONT 4
A.5	FRESNEL FRONT 5
A.6	FRESNEL FRONT 6
A.7	FREE DIMMER
A.8	FREE DIMMER
A.9	FREE DIMMER
A.10	FREE DIMMER
A.11	FREE DIMMER
A.12	FREE DIMMER
A.13	FRONT PAR 1
A.14	FRONT PAR 2
A.15	FRONT PAR 3
A.16	FRONT PAR 4
A.17	FRONT PAR 5
A.19	SIDE PAR 1.1
A.20	SIDE PAR 1.2
A.21	SIDE PAR 1.3
A.22	SIDE PAR 2.1
A.23	SIDE PAR 2.2
A.24	SIDE PAR 2.3
A.25	PAR MIDDLE 1
A.26	PAR MIDDLE 2
A.27	PAR MIDDLE 3
A.28	PAR MIDDLE 4
A.29	PAR MIDDLE 5
A.30	PAR MIDDLE 6
A.31	PAR BACK 1
A.32	PAR BACK 2
A.33	PAR BACK 3
A.34	PAR BACK 4
A.35	PAR BACK 5
A.36	PAR BACK 6
A.37	4-WAY BLINDER 1.1
A.38	4-WAY BLINDER 1.2
A.39	4-WAY BLINDER 2.1
A.40	4-WAY BLINDER 2.2
A.41	2-WAY BLINDER
A.42	2-WAY BLINDER
A.43	2-WAY BLINDER
A.44	2-WAY BLINDER
A.49	FREE DIMMER (49-54)
A.55	FREE DIMMER (55-60)
A.81	TOUR HAZER / STAGE RIGHT / HAZE
A.82	TOUR HAZER / STAGE RIGHT / FAN
A.83	TOUR HAZER / STAGE LEFT / HAZE
A.84	TOUR HAZER / STAGE LEFT / FAN

A.100	VARYTEC HERO WASH 712Z 301
A.115	VARYTEC HERO WASH 712Z 302
A.130	VARYTEC HERO WASH 712Z 303
A.145	VARYTEC HERO WASH 712Z 304
A.160	VARYTEC HERO WASH 712Z 305
A.175	VARYTEC HERO WASH 712Z 306

DMXLINE 2 (B)

B.1	VARYSCAN P7 101
B.32	VARYSCAN P7 102
B.63	VARYSCAN P7 103
B.94	VARYSCAN P7 104
B.125	VARYSCAN P7 105
B.156	VARYSCAN P7 106
B.187	VARYSCAN P7 107
B.218	VARYSCAN P7 108
B.251	CLAY PAKY MINI-B 201
B.280	CLAY PAKY MINI-B 202
B.309	CLAY PAKY MINI-B 203
B.338	CLAY PAKY MINI-B 204
B.367	CLAY PAKY MINI-B 205
B.396	CLAY PAKY MINI-B 206
B.425	CLAY PAKY MINI-B 207
B.454	CLAY PAKY MINI-B 208
B.497	Atomic Strobe 401
B.501	Atomic Strobe 402
B.505	Atomic Strobe 403
B.509	Atomic Strobe 404

DMXLINE 3 (C)

FREE



JB-LIGHTING Varyscan P7 – Mode 2, 31 Channels
CLAY PAKY MINI-B Extended RGBW 16bit 29CH
Martin Atomic – 4 Channel Mode
Varytec Hero Wash 712 Z RGBW – 15 Channels
GLP Volkslicht RGB – Mode 13 Channels

PICTURES HALLE

WALK TROUGH THE VENUE (GOOGLE STREET VIEW):
http://bit.ly/kofmehl_big_room

VIEW FROM STAIRS TO STAGE



VIEW FROM STAGE TO FOH



RAUMBAR (Small Concert Room)

MAX. SOUND LEVEL 100 DB (A) LEQ AVERAGE PER HOUR!

In Switzerland, its not allowed to exceed the Limit of LEQ 100 dB(A) per hour with tolerated peaks up to 125 dB. Measurement positions and devices, with which the Kulturfabrik Kofmehl takes their measurements, have been calibrated and approved by the department in charge. Measurement data of each concert are being recorded and evaluated.

IT'S FORBIDDEN TO USE FREQUENCIES IN THE SPECTRUM OF 694 MHZ – 823 MHZ (700-RANGE) IN SWITZERLAND

SOUND SPECIFICATION

FRONT OF HOUSE

SPEAKERS	2 x	IsiTopRS30080
	6 x	Stoll FR 2500 Bass Extender (15")
AMPING	2 x	Lab.gruppen fp 10000 Q
CONTROLLER	2 x	Marani LPP-480F / DPA240P
MIXING CONSOLE	1 x	Allen & Heath SQ5
	1 x	Allen & Heath Avantis
MULTICORE	1 x	Analog Muco 32x8
	2 x	RJ45 Kat. 6 (Ethercon)
	1 x	Allen & Heath Digital Stage Box 48/16

MONITORING

FLOORWEDGES	6 x	Martin Audio LE 350
DRUMFILL	1 x	dB Technologies Opera 82-15
AMPING	1 x	Lab.gruppen 1200 C (for the wedges)
	1 x	Lab.gruppen 1200 C (for the drumfill)

EQUIPMENT LIST

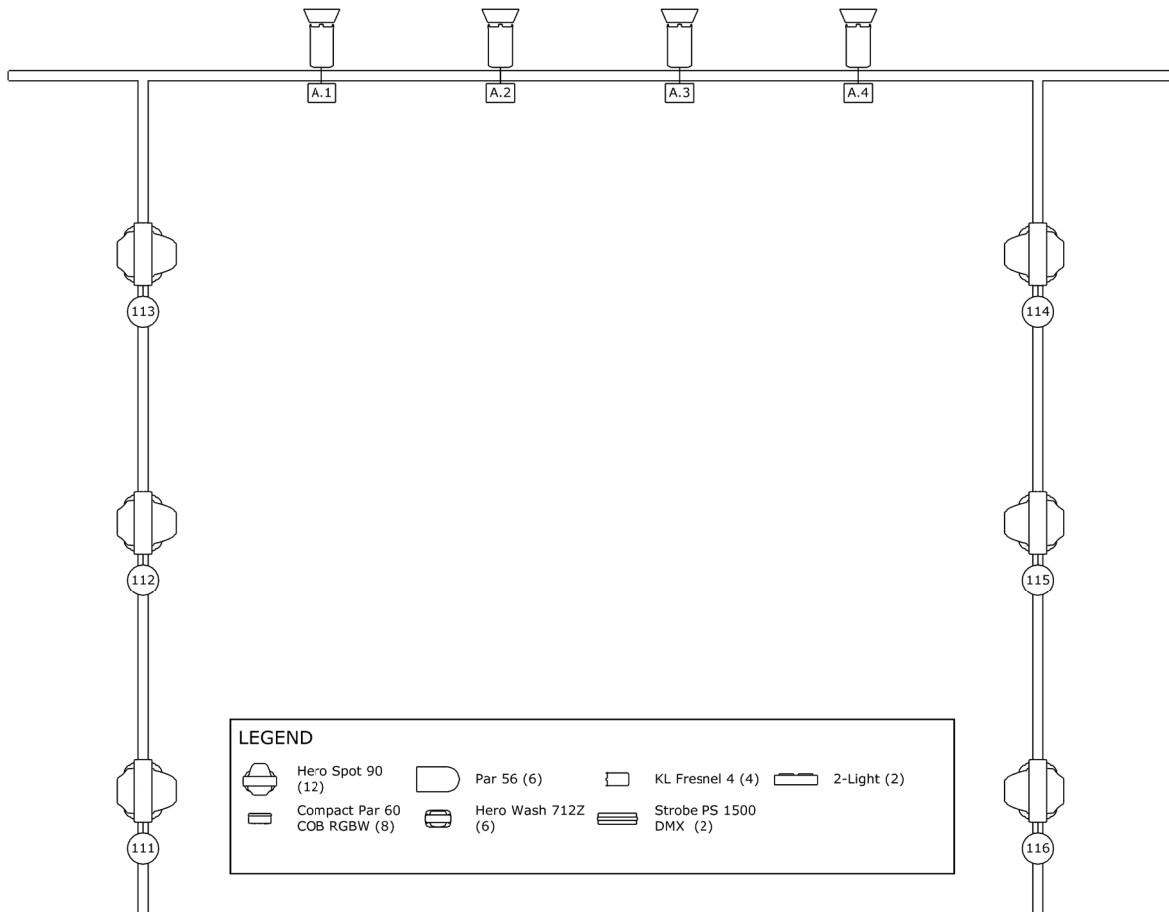
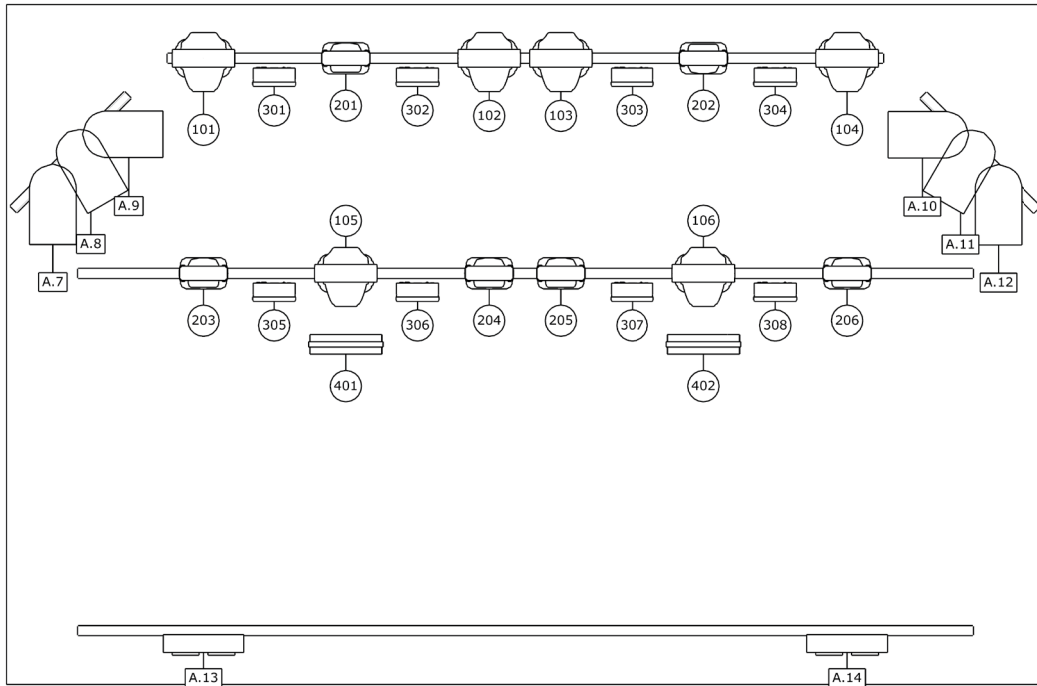
MICROPHONES & DI	1 x	Shure Beta 91	1 x	Radial ProD2 Passive DI (dual)	
	1 x	Shure Beta 52	3 x	BSS Active DI	
	3 x	Shure Beta 56	3 x	Passive DI	
	2 x	Shure Beta 58			
	4 x	Shure SM 58			
	5 x	Shure SM 57	DJ-ING	1 x	Pioneer DJM 900 NEXUS Mixe
	1 x	Audix D6		1 x	Pioneer DJM 900 Mixer
	1 x	AKG C-451B		2 x	Pioneer CDJ 3000
	3 x	RODE NT5		2 x	Pioneer CDJ 2000 NEXUS CD Player
	4 x	Sennheiser e604		2 x	Pioneer CDJ 2000 CD Playerr
	2 x	Sennheiser e609		2 x	Technics MKII Turntables
	1 x	Sennheiser e945			

STAGE SIZE Width 5.8m / Depth 3.8m / Height 0.45m
Clearance ≈ 2.8m (between Stage and Rig)

BACKLINE POWER 4 x Type 13 230V 13A

LIGHT SPECIFICATION - RAUMBAR

STAGE & PARTY TRUSS



LEGEND			
	Hero Spot 90 (12)		Par 56 (6)
	Compact Par 60 COB RGBW (8)		KL Fresnel 4 (4)
	Hero Wash 712Z (6)		2-Light (2)
	Strobe PS 1500 DMX (2)		

LIGHT SPECIFICATION RAUMBAR

DMXLINE 1 (A)

A.1	FRESNEL LED FRONT 1
A.2	FRESNEL LED FRONT 2
A.3	FRESNEL LED FRONT 3
A.4	FRESNEL LED FRONT 4
A.7	BACK PAR 1
A.8	BACK PAR 2
A.9	BACK PAR 3
A.10	BACK PAR 4
A.11	BACK PAR 5
A.12	BACK PAR 6
A.13	BLINDER 1
A.14	BLINDER 2
A.15	FREE DIM CHANNEL
A.16	FREE DIM CHANNEL
A.17	FREE DIM CHANNEL
A.18	FREE DIM CHANNEL
A.20	STAIRVILLE STROBE 1500W (RATE) 1.1
A.21	STAIRVILLE STROBE 1500W (INTENSITY) 1.2
A.22	STAIRVILLE STROBE 1500W (RATE) 2.1
A.23	STAIRVILLE STROBE 1500W (INTENSITY) 2.2
A.83	TOUR HAZER / HAZE
A.84	TOUR HAZER / FAN
A.223	LED PAR BACK 301
A.229	LED PAR BACK 302
A.235	LED PAR BACK 303
A.241	LED PAR BACK 304
A.247	LED PAR BACK 305
A.253	LED PAR BACK 306
A.259	LED PAR BACK 307
A.265	LED PAR BACK 308

A.320	VARYTEC HERO SPOT 90 101
A.336	VARYTEC HERO SPOT 90 102
A.352	VARYTEC HERO SPOT 90 103
A.368	VARYTEC HERO SPOT 90 104
A.384	VARYTEC HERO SPOT 90 105
A.400	VARYTEC HERO SPOT 90 106
A.417	VARYTEC HERO WASH 201
A.432	VARYTEC HERO WASH 202
A.447	VARYTEC HERO WASH 203
A.462	VARYTEC HERO WASH 204
A.477	VARYTEC HERO WASH 205
A.492	VARYTEC HERO WASH 206

DMXLINE 2 (B) – ROOM LIGHT

B.55	VARYTEC HERO SPOT 90 PARTY TRUSS 111
B.71	VARYTEC HERO SPOT 90 PARTY TRUSS 112
B.87	VARYTEC HERO SPOT 90 PARTY TRUSS 113
B.103	VARYTEC HERO SPOT 90 PARTY TRUSS 114
B.119	VARYTEC HERO SPOT 90 PARTY TRUSS 115
B.135	VARYTEC HERO SPOT 90 PARTY TRUSS 116



Varytec Hero Wash 712 Z RGBW – Mode 15 Channels
 Varytec Hero Spot 90 – Mode 16 Channels
 Showtec Compact Par 60COB RGBW - Mode 11 Channels

LIGHT EQUIPMENT

6 x	Varytec Hero Spot 90
6 x	Varytec Hero Wash 712Z RGBW
8 x	SHOWTEC COMPACT PAR 60COB RGBW
6 x	Varytec Hero Spot 90 (Party Truss)
6 x	CAMEO LED PAR 64 – 12 X 10W RGBWA + UV
10 x	PAR 56
4 x	LED Fresnel Selecon
2 x	Blinder 650W
1 x	Tour Hazer
2 x	Stairville Strobe 1500W

LIGHT CONSOLE

1 x	Avolites Titan Mobile
-----	-----------------------

FREE POWER FOR YOUR USE

1 x	CEE 32A (3 Phase CEE)
3 x	Typ 13 / Schuko 16A

PICTURES RAUMBAR

WALK TROUGH THE VENUE (GOOGLE STREET VIEW):
http://bit.ly/kofmehl_small_room



FOH

